

# Co-Ti (Cobalt-Titanium)

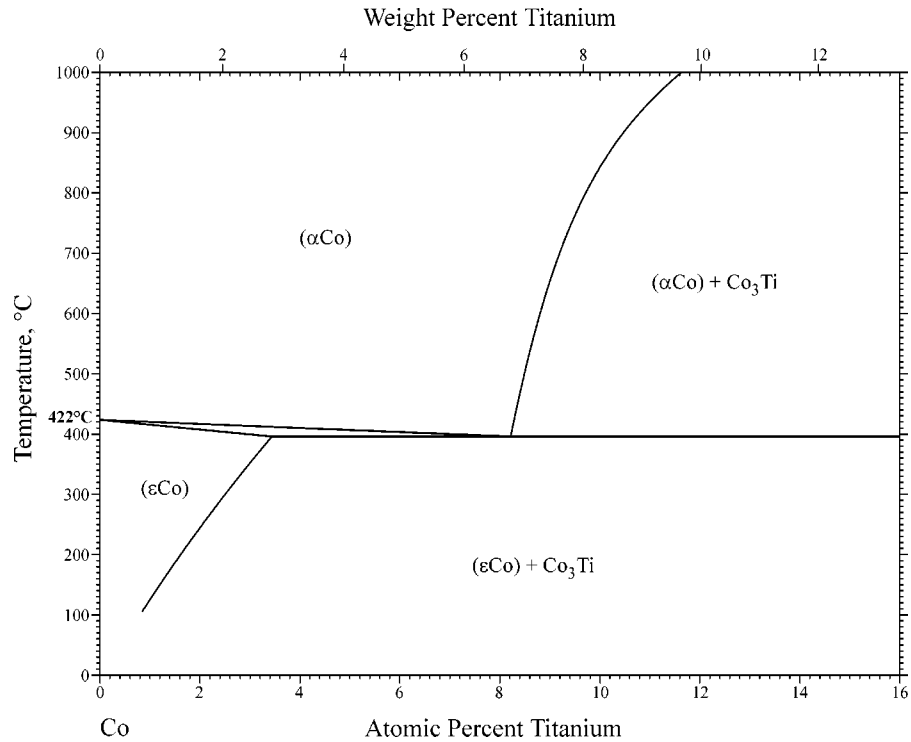
H. Okamoto

Many researchers investigated the relationship between the ( $\alpha$ Co) and ( $\epsilon$ Co) phases in the Co-Ti system by means of heating-cooling curves, metallography, and electron-probe microanalysis. Experimental data were widely scattered, as reviewed by [1999Zao], presumably due to very sluggish transitions at low temperatures. Figure 1 shows the phase

relationship assessed by [1999Zao]. [Massalski2] did not show the Co-Ti phase diagram below 600 °C.

## References

**1999Zao:** J.C. Zao: *Z. Metallkd.*, 1999, vol. 90 (3), pp. 223-32.



**Fig. 1** Co-Ti phase diagram